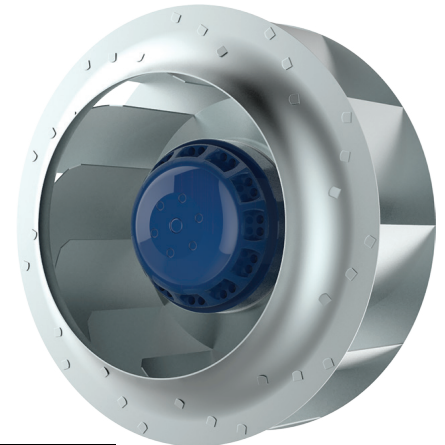


## PRODUCT SPECIFICATION



<b>TYPE</b>	AC centrifugal fan, backward curved
<b>MODEL</b>	BL-B225C-2E-C01-01

### NOMINAL DATA

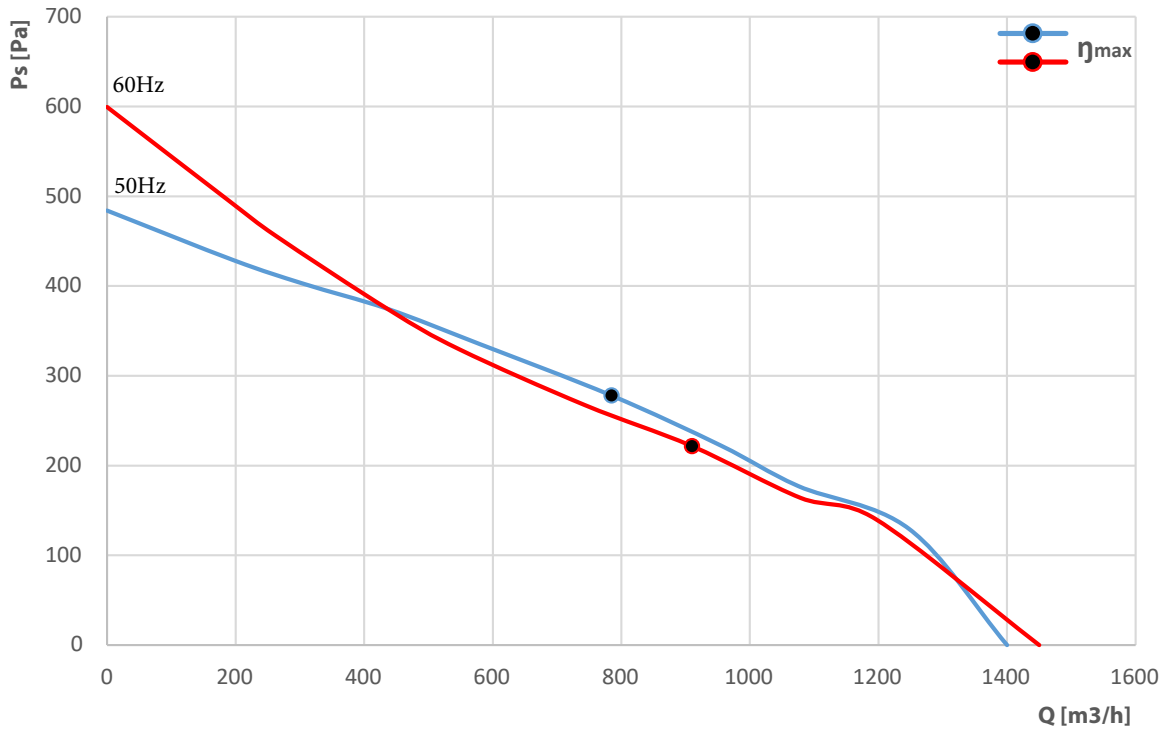


Phase	-	1~	1~
Nominal Voltage	VAC	230	230
Frequency	Hz	50	60
Speed	RPM	2700	3000
Power Input	W	155	198
Current	A	0.70	0.90
Sound Pressure Level	dBA	70	71
Capacitor	µF	4.0	4.0
Capacitor Voltage	VDB	450	450
Valid For Approval/Standard		CE	CE
Min. Ambient Temperature	°C	-25	-25
Max. Ambient Temperature	°C	+50	+50

### TECHNICAL FEATURES

Mass	2.5 Kg
Dimensions	225 mm
Material Of Impeller	Galvanized steel
Number Of Blades	11
Direction Of Rotation	Clockwise, seen on rotor
Surface Of Rotor	Coated in reflex BLUE C
Type of protection	IP44
Insulation Class	B
Condensate Discharge Holes	On rotor side
Min./Max. permissible ambient motor temperature (transportable/ storage)	- 40°C ... + 80°C
Operation Mode	S1
Motor Bearing	Ball bearing
Motor Protection	Self-resetting TOP wired internally
Length Of Cable	450 mm
RoHS	All material accord with RoHS
Min./Max. Humidity	0% ... 90% RH
Motor	External rotor AC motor
Deviation Of Impeller In Axial Direction	≤1mm
Deviation Of Impeller In Radial Direction	≤1mm

**PERFORMANCE CURVES**

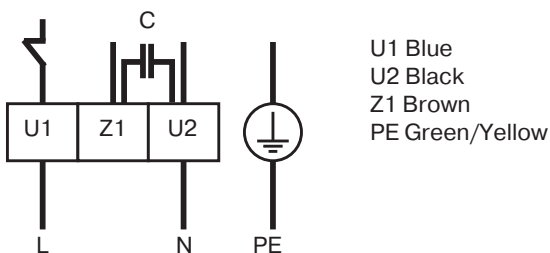


**DATA ACCORDING TO ErP DIRECTIVE**

Installation category	A
Efficiency category	Static
Variable speed drive	No
Specific ratio	1,00

	Actual	Request 2015
Overall efficiency $\eta_{es}$	39	43
Efficiency grade N	58	62
Power input P, W	155	
Air flow V, m <sup>3</sup> /h	785	
Pressure increase $\Delta P$ , Pa	278	

**ELECTRICAL CONNECTION DIAGRAMM**



DIMENSIONS DRAWING

