

PRODUCT SPECIFICATION

TYPE

Centrifugal impeller, backward curved

MODEL

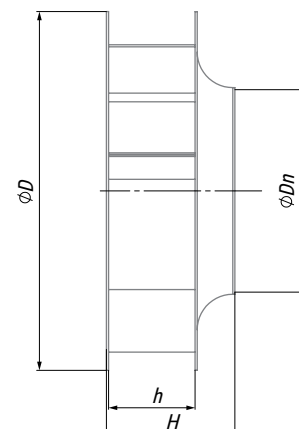
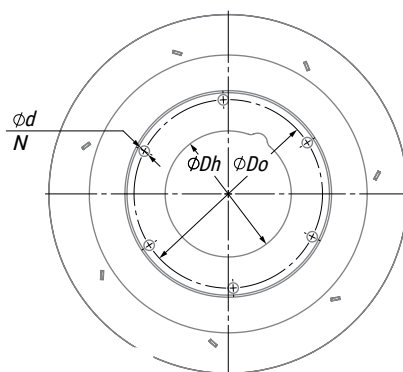
KRR50A/IR 500KR



Description

- Size - 500mm
- Material: steel, powder coated in blue
- Coatings RAL 5007. Cover type - GL
- Number of blades is seven (7)
- Single-flow
- Operation Mode - S1
- Fitting position horizontal or vertical
- Contents of delivery:
 - inlet ring with the ability to measure volumetric flow
 - screwed hub
 - clamping sleeve for a specific motor shaft
- Min./Max. permissible ambient impeller temperature (transportable/ storage) - (- 40°C ... + 80°C)
- Min. Ambient Temperature - (- 20°C)
- Max. Ambient Temperature - (+ 80°C)

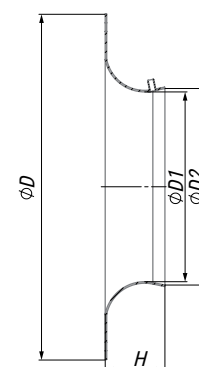
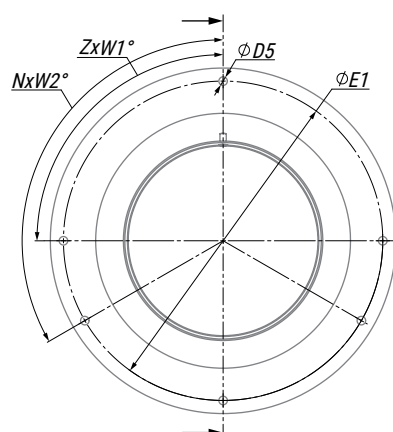
IMPELLER



OVERALL DIMENSIONS

| Model | ϕD [mm] | ϕDn [mm] | H [mm] | h [mm] | ϕDh [mm] | ϕDo [mm] | ϕd [mm] | N | Weight [kg] |
|-------------|---------------|----------------|--------|--------|----------------|----------------|---------------|---|-------------|
| KRR50A/SM20 | 580.5 | 326 | 206 | 140 | 140.3±0.1 | 190 | 9.5 | 6 | 15.6 |

INLET RING



OVERALL DIMENSIONS

| Model | ϕD [mm] | H [mm] | $\phi D1$ [mm] | $\phi D2$ [mm] | $\phi E1$ [mm] | $\phi D5$ [mm] | $Z \times W1^\circ$ | $N \times W2^\circ$ | Weight [kg] |
|----------|---------------|--------|----------------|----------------|----------------|----------------|---------------------|---------------------|-------------|
| IR 500KR | 514 | 94 | 304.3 | 316.1 | 488 | 8.5 | 4x90 | 3x120 | 3.2 |

