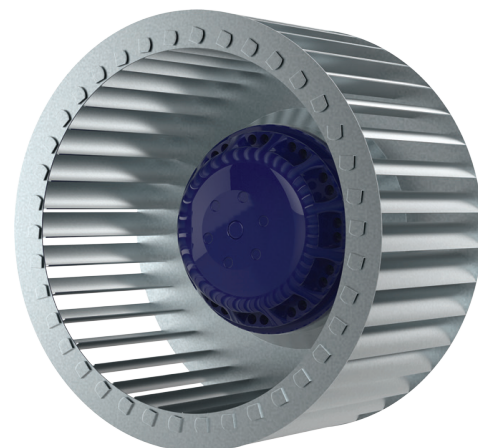


## PRODUCT SPECIFICATION



<b>TYPE</b>	AC centrifugal fan, forward curved
<b>MODEL</b>	BL-F180A-4E-C01-01

### NOMINAL DATA

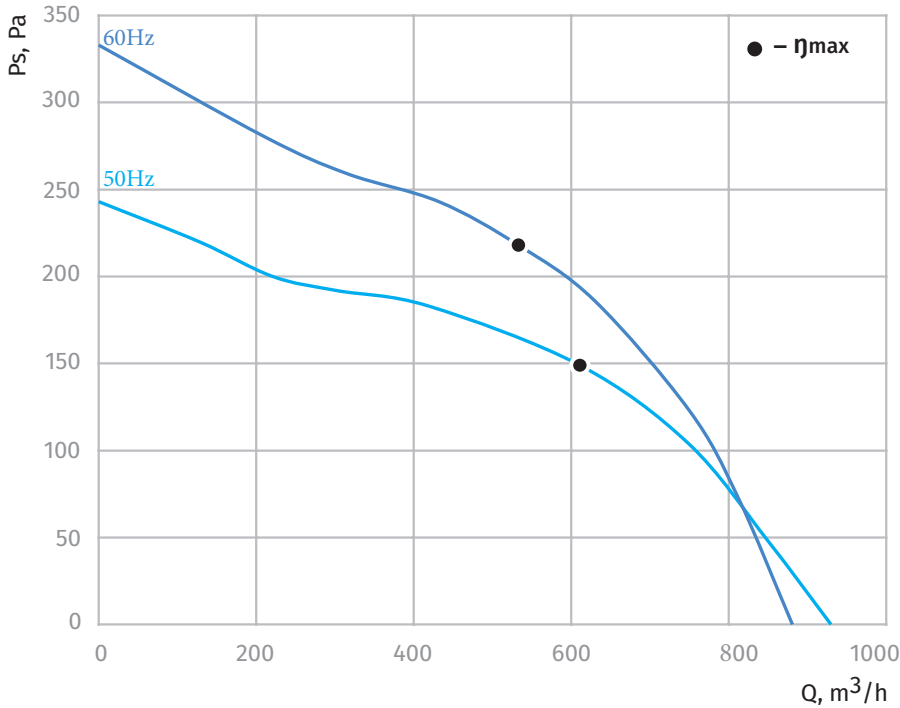


Phase	-	1~	1~
Nominal Voltage	VAC	230	230
Frequency	Hz	50	60
Speed	RPM	1400	1700
Power Input	W	132	151
Current	A	0.58	0.66
Sound Pressure Level	dBA	60	65
Capacitor	µF	3.0	3.0
Capacitor Voltage	VDB	450	450
Valid For Approval/Standard		CE	CE
Min. Ambient Temperature	°C	-25	-25
Max. Ambient Temperature	°C	+50	+50

### TECHNICAL FEATURES

Mass	2 Kg
Dimensions	180 mm
Material Of Impeller	galvanized steel
Number Of Blades	38
Direction Of Rotation	Clockwise, seen on rotor
Surface Of Rotor	Coated in reflex BLUE C
Type of protection	IP44
Insulation Class	F
Condensate Discharge Holes	On rotor side
Min./Max. permissible ambient motor temperature (transportable/ storage)	- 40°C ... + 80°C
Operation Mode	S1
Motor Bearing	Ball bearing
Motor Protection	Self-resetting TOP wired internally
Length Of Cable	450 mm
RoHS	All material accord with RoHS
Min./Max. Humidity	0% ... 90% RH
Motor	External rotor AC motor
Deviation Of Impeller In Axial Direction	≤1mm
Deviation Of Impeller In Radial Direction	≤1mm

**PERFORMANCE CURVES**

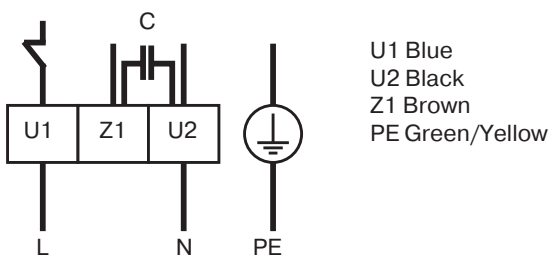


**DATA ACCORDING TO ErP DIRECTIVE**

Installation category	A
Efficiency category	Static
Variable speed drive	No
Specific ratio	1,00

	Actual	Request 2015
Overall efficiency $\eta_{es}$	25	31
Efficiency grade N	46.3	44
Power input P, W	100	
Air flow V, m³/h	611	
Pressure increase $\Delta P$ , Pa	149	

**ELECTRICAL CONNECTION DIAGRAMM**



**DIMENSIONS DRAWING**

