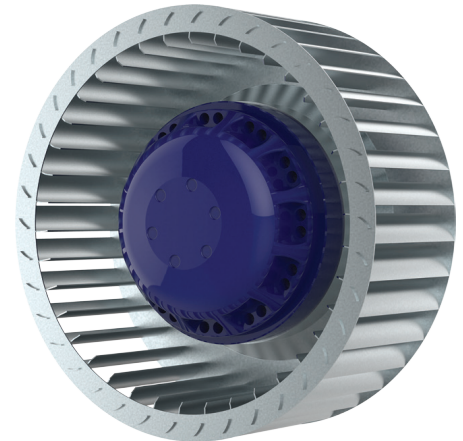


PRODUCT SPECIFICATION



TYPE	AC centrifugal fan, forward curved
MODEL	BL-F160A-2E-D02-01

NOMINAL DATA

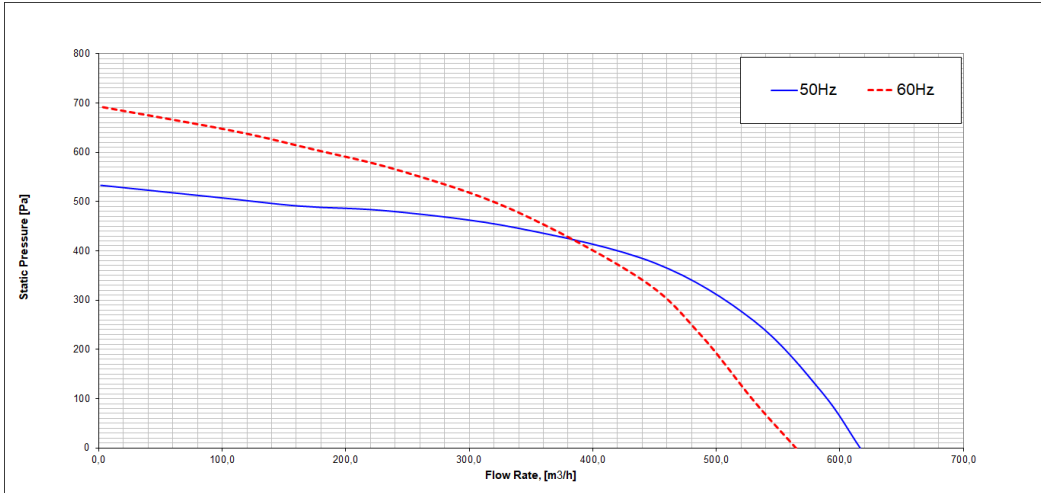


Phase	-	1~	1~
Nominal Voltage	VAC	230	230
Frequency	Hz	50	60
Speed	RPM	2850	3250
Power Input	W	250	270
Current	A	1.10	1.20
Sound Pressure Level	dBA	68	72
Capacitor	µF	6.0	6.0
Capacitor Voltage	VDB	450	450
Valid For Approval/Standard		CE	CE
Min. Ambient Temperature	°C	-25	-25
Max. Ambient Temperature	°C	+50	+30

TECHNICAL FEATURES

Mass	2.3 Kg
Dimensions	160 mm
Material Of Impeller	galvanized steel
Number Of Blades	38
Direction Of Rotation	Clockwise, seen on rotor
Surface Of Rotor	Coated in reflex BLUE C
Type of protection	IP44
Insulation Class	F
Condensate Discharge Holes	On rotor side
Min./Max. permissible ambient motor temperature (transportable/ storage)	- 40°C ... + 80°C
Operation Mode	S1
Motor Bearing	Ball bearing
Motor Protection	Self-resetting TOP wired internally
Length Of Cable	450 mm
RoHS	All material accord with RoHS
Min./Max. Humidity	0% ... 90% RH
Motor	External rotor AC motor
Deviation Of Impeller In Axial Direction	≤1mm
Deviation Of Impeller In Radial Direction	≤1mm

PERFORMANCE CURVES

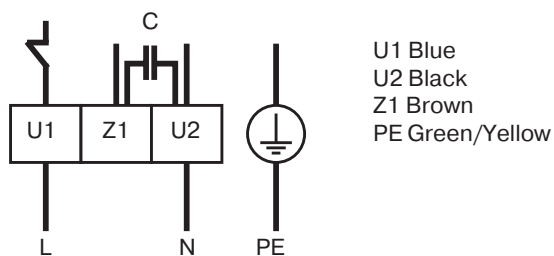


DATA ACCORDING TO ErP DIRECTIVE

Installation category	A
Efficiency category	Static
Variable speed drive	No
Specific ratio	1,00

	Actual	Request 2015
Overall efficiency η_{es}	25	33
Efficiency grade N	44.1	44
Power input P, W	166	
Air flow V, m ³ /h	340	
Pressure increase ΔP , Pa	447	

ELECTRICAL CONNECTION DIAGRAMM



DIMENSIONS DRAWING

