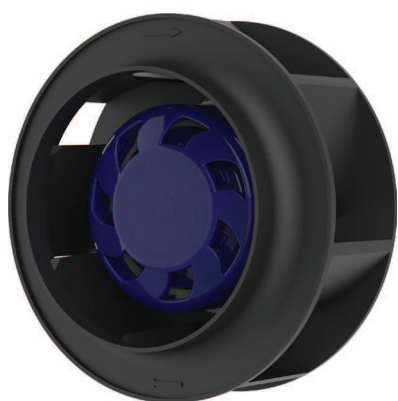


Ø 133 MM, BACKWARD CURVED

EC CENTRIFUGAL FAN



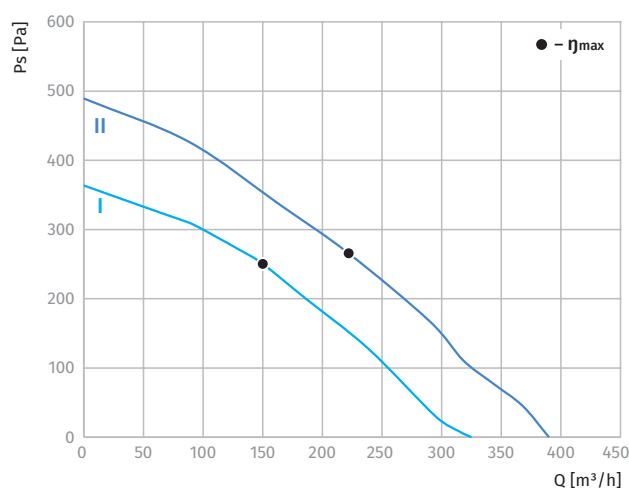
Features

- **Speed control:** 0 ~ 10 V DC/PWM
- **Impeller material:** PA plastic + 30 % glass fiber
- **Direction of rotation:** clockwise, seen on rotor
- **Type of protection:** IP55
- **Insulation class:** B
- **Mode of operation:** continuous operation (S1)
- **Bearing:** ball bearings
- **Motor protection:** self-resetting TOP wired internally



Technical data

Model	Perform. curve	Nominal voltage [VAC]	Frequency [Hz]	Speed [RPM]	Power input max [W]	Current max [A]	Sound pres. level [dBA]	Perm. amb. temp. [°C]	Capacitor [µF/VDB]	Electrical connection
BL-B133A-EC-00	I	230	50/60	4200	42	0.40	71	-25 ... +60	-	E
BL-B133A-EC-03	II	230	50/60	4780	62	0.52	71	-25 ... +60	-	E



Overall dimensions

