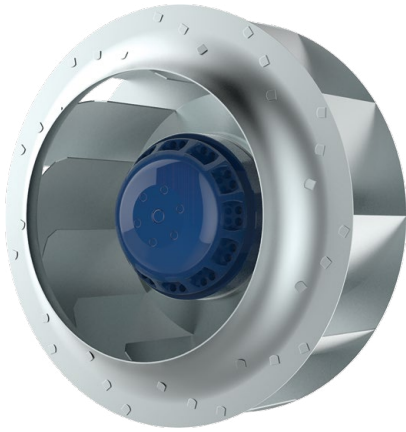


Ø 225 MM, BACKWARD CURVED

AC CENTRIFUGAL FAN



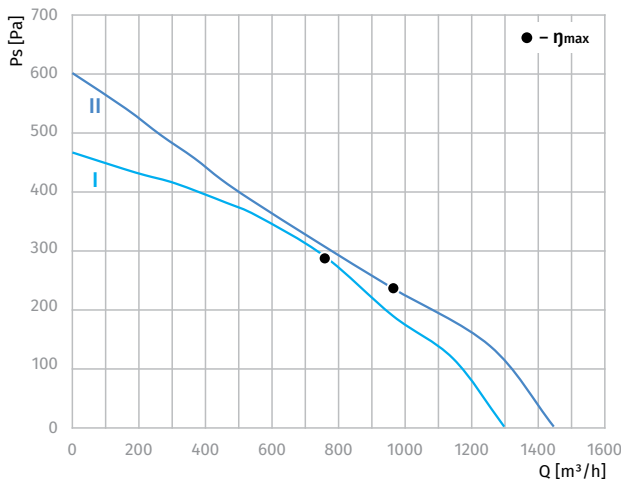
Features

- Impeller material: galvanized steel
- Direction of rotation: clockwise, seen on rotor
- Type of protection: IP44
- Insulation class: B
- Mode of operation: continuous operation (S1)
- Bearing: ball bearings
- Motor protection: self-resetting TOP wired internally



Technical data

| Model | Perform. curve | Nominal voltage [VAC] | Frequency [Hz] | Speed [RPM] | Power input max [W] | Current max [A] | Sound pres. level [dBA] | Perm. amb. temp. [°C] | Capacitor [µF/VDB] | Electrical connection |
|--------------------|----------------|-----------------------|----------------|-------------|---------------------|-----------------|-------------------------|-----------------------|--------------------|-----------------------|
| BL-B225F-2E-C01-01 | I | 230 | 50 | 2500 | 130 | 0.60 | 70 | -25 ... +50 | 3.5/450 | A |
| | II | 230 | 60 | 2600 | 170 | 0.70 | 71 | -25 ... +50 | 3.5/450 | A |



Overall dimensions

